



**MTPReel™**

Multi Teach Pendant Reel

**sumcab**  
ROBOTICS

# MTPReel™

The cable retraction system  
for teach panels

Tangled cables on the handheld  
programming device? Not with us!  
Our innovative MTPReel™ cable retraction  
system ensures safety and order in the  
production environment.  
Our motto is "Safety First".

## MTPReel™ The smart solution!

Sumcab Robotics' automatic cable retraction system, MTPReel, is a patented system developed with the purpose of improving working and safety conditions in the production environment.



Safety first



Time saving



Process security



Reduced wear



Avoidance  
of operating errors



Patented System –  
Made in Italy



# At a glance

1

## The situation

In the case of robots and industrial machines, the movement sequences must be regularly adapted using hand-held programming devices. For accurate programming, it is important to have the handheld programming device used where the movement is taking place. Therefore, a long cable is often necessary.

## Your advantages

The MTPReel automatically eliminates possible tripping hazards in your production hall and thus improves work safety. At the same time, it reduces wear on the cable and therefore ensures a reliable production environment.

3

## The problem

After using the hand-held programming device, the cable is no longer required. However, it is often not properly stowed away. Therefore, there is a constant risk of tripping over it or damaging the cable by kinking and crushing.

## Our solution

The MTPReel cable retraction system allows the cable to be pulled out in length as required. After use, the cable is automatically retracted and safely stowed away. A brake module that reduces the retraction speed is integrated for optimum cable winding.



**For a safe production environment**

2

4



## Structure and Basic Components

1

### Rotating slip ring system

ensures a constant and uniform electrical contact between components and enables a fail-safe data transmission.

2

### Durable connecting cable

withstands even harsh production conditions. Thanks to its heavy-duty flame-retardant polyurethane construction, it is more long-lasting and therefore needs to be replaced less frequently.

3

### Wire rope pulley with spring element

provides comfortable cable extension and retraction. A detachable locking mechanism every 50 cm ensures precise handling.

4

### Rotating mounting bracket

enables a stable attachment of the MTPReels while allowing for flexible orientation in the direction of extension.

5

### Housing made of impact-resistant plastic

protects the cable and the interior of the MTPReels from impacts.

6

### Integrated cable brake

Slows down the winding of the cable intentionally. This allows for controlled and automatic retraction, which protects the cable and is time-saving for the employee.



# Your Advantages



## Safety First

Untidy cables always pose a safety risk. The automatic cable retraction system MTPReel makes excess cable disappear, thereby reducing tripping hazards in the production hall.



## Optimized processes

With MTPReel, the cable is automatically retracted, freeing employees from unpleasant cleanup work and saving time for other tasks.



## Reduced wear

The wound cable is protected against damage and cannot be accidentally damaged by tangling, kinking, or crushing. This increases the lifespan and reduces maintenance effort.

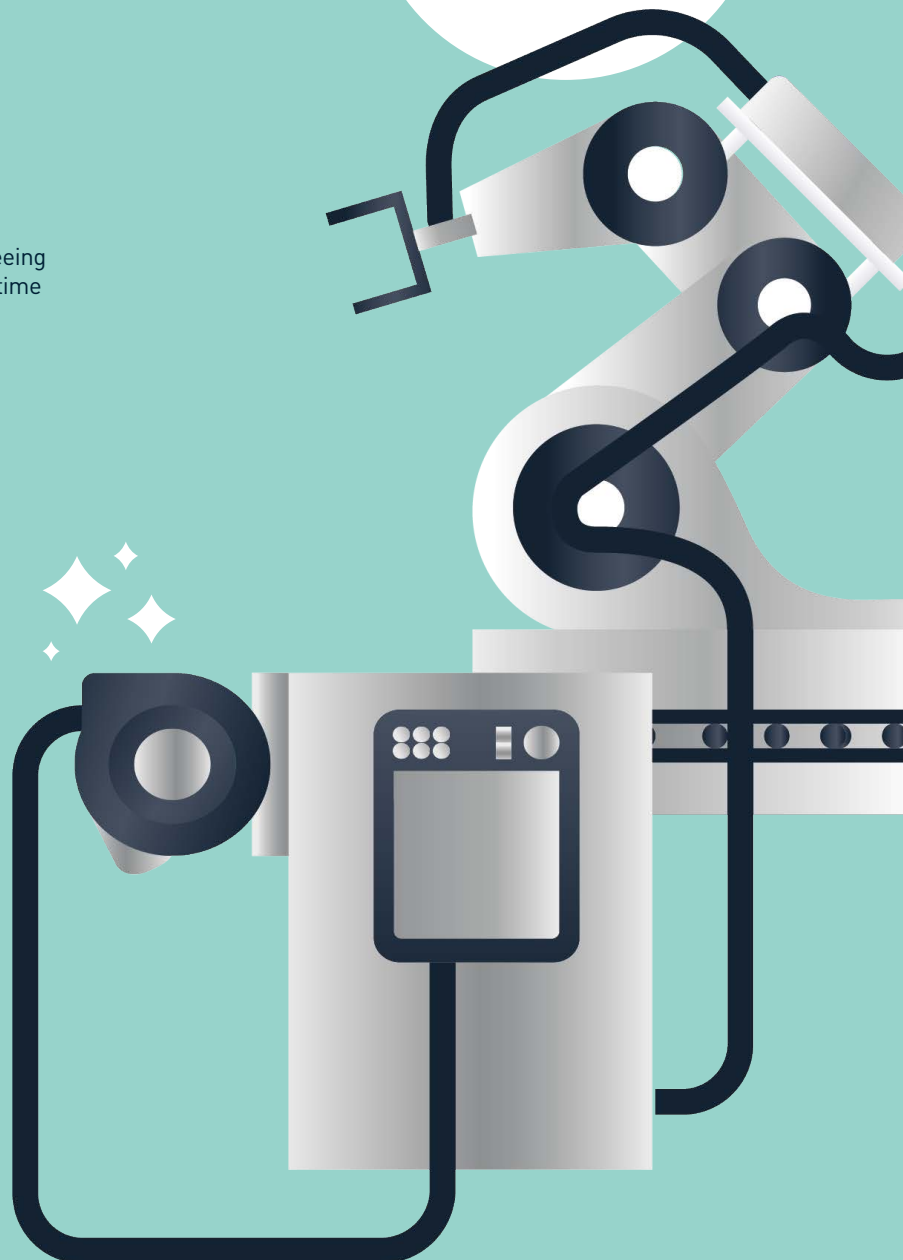


## Investment instead of additional costs

The sum of all MTPReel advantages enables cost savings, which will refinance the investment in an MTPReel will be refinanced again.

TÜV-tested OEM accessories

More than  
**35.000**  
MTPReel  
installations  
worldwide

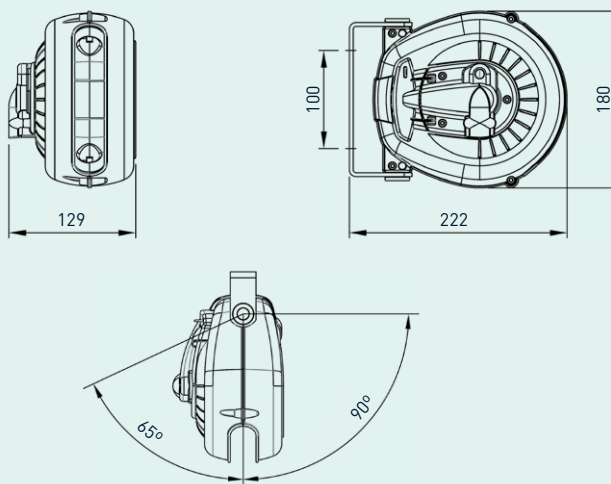


# MTPReel™

## Versions

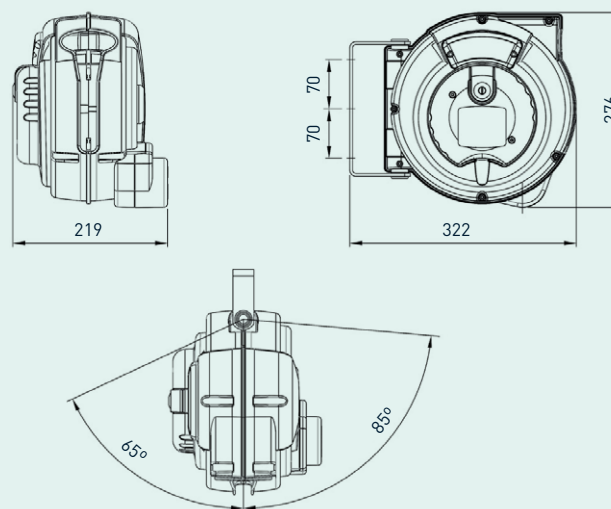
### Mini < 10 m

---

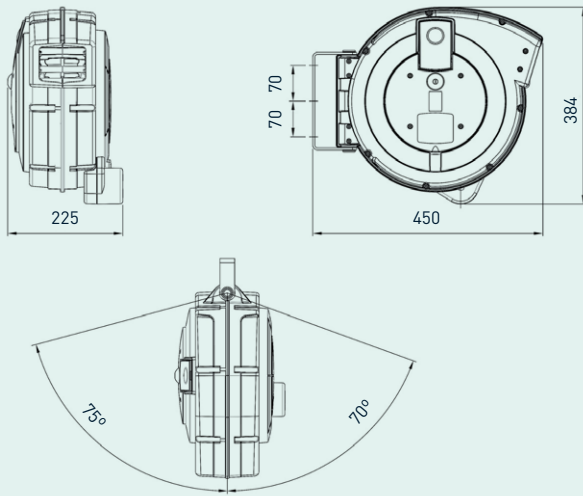


### Medium 10 - 15 m

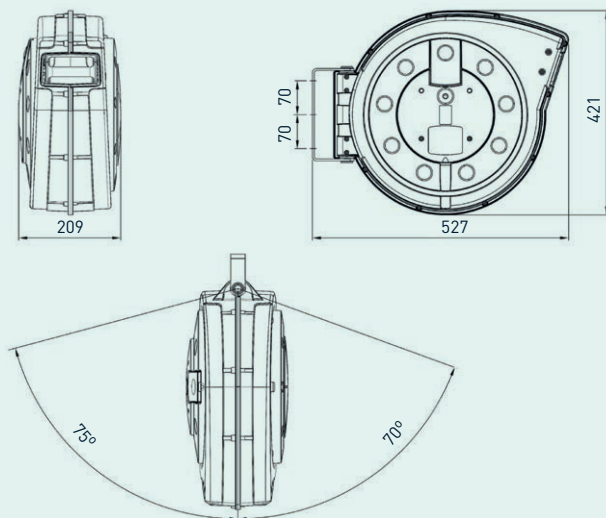
---



## Large 20 - 25 m



## Jumbo > 25 m



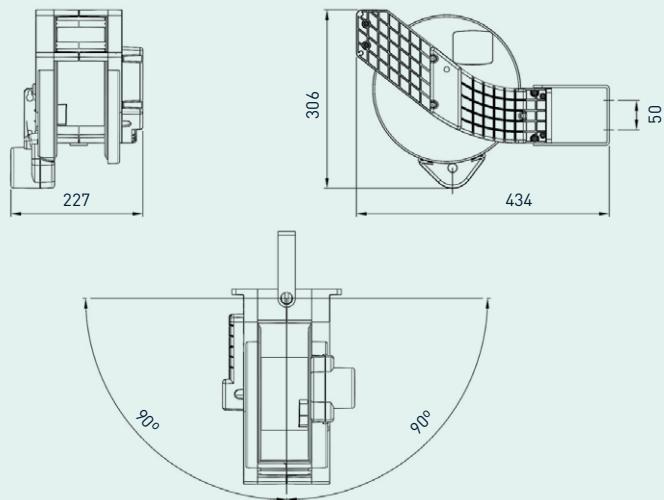
# MTPReel™

## Versions



### Open

Without extension line



The extension cable to the control cabinet has a standard length of **2,5 m**.

Further housing sizes and cable lengths available on request. We are happy to advise you!



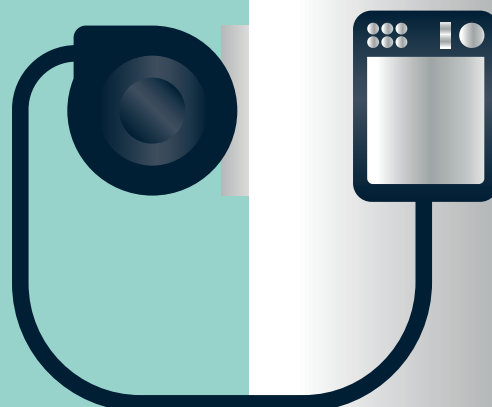
Scan this QR code  
and watch the video

### MTPReel™

#### available in numerous variants

The **MTPReel** is available in different sizes, with range of cable lengths and for almost all robot control system on the market.

[www.sumcab.de](http://www.sumcab.de)





## MTPReel™ - O Installation Guide



1

Passing the original connecting cable through the guide rollers.



2

Plugging in the cable to the built-in male connector.



3

Free adjustment of the strain relief.



4

Closure of the cable tie around the cable outer jacket.



5

Cutting off the excess cable tie.



6

Inserting the plug cover.



7

Locking the cover by pressing it down.



8

Final cable installation.



9

Attaching the cable pull stopper to the connection cable, mounting it approximately 1-1.5 meters away from the handheld device.



10



11

Loosening the nut from the locking pin of the pre-tensioned drum reel.



12

Initial manual winding of the connecting cable.



13

Attaching the cover at the rear to the installed cover guide.



14

Inserting the middle guide tabs by initially attaching the cover at a slight angle from the side and then final snapping into place.

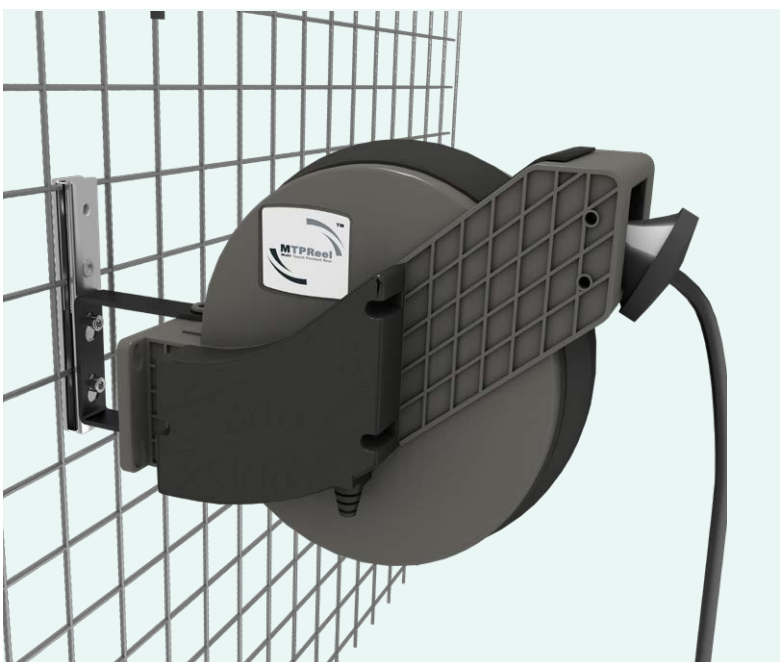
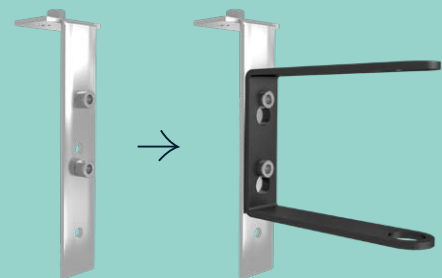
## Accessories

### Mounting Elements

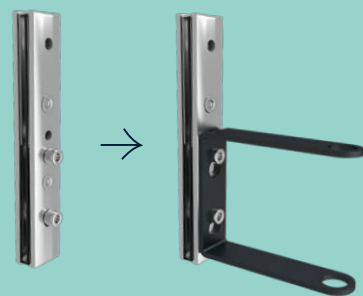
For optimal installation of the MTPReels, we offer various mounting elements such as mounting racks (profile tube constructions), control cabinet stands (swiveling or fixed), and other mounting options upon request (e.g., special mounting plates on the safety fence).



**Mounting plate  
for the control cabinet**



**Mounting solutions for control  
cabinets or industrial fences**

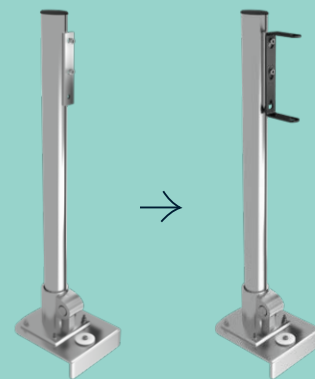


We have  
the suitable solution  
for every MTPReel.

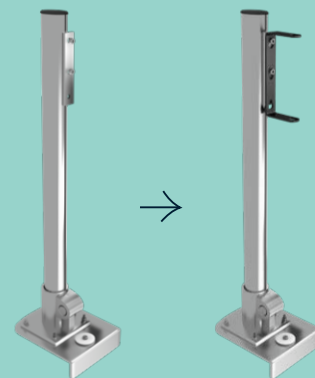
We will be pleased  
to assist you!



Fixed profile tube stand  
for mounting on the control  
cabine



Rotatable (360°) or fixed profile  
tube stand for attachment  
to the control cabinet

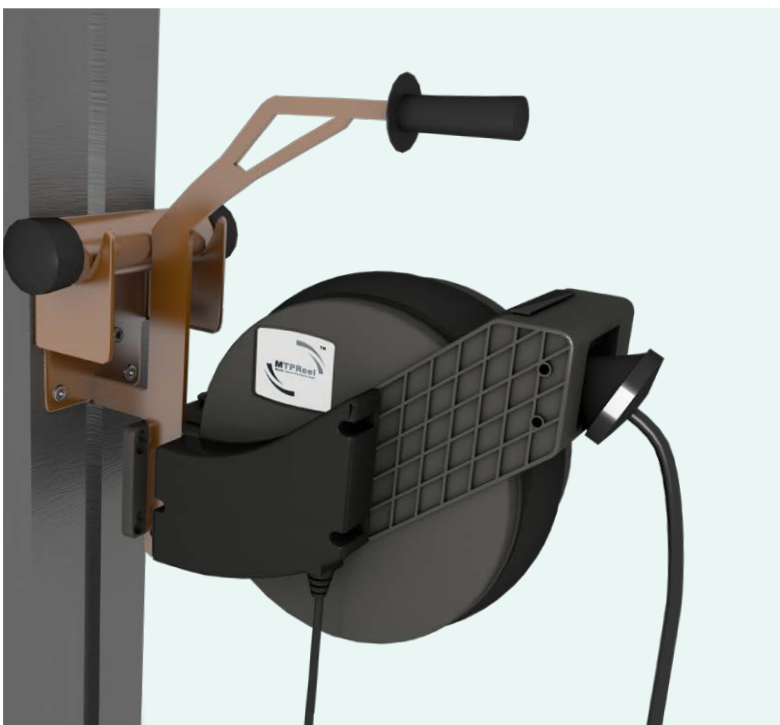
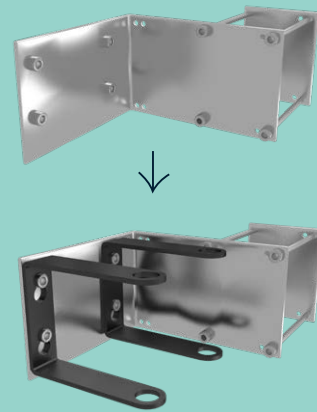


## Accessories

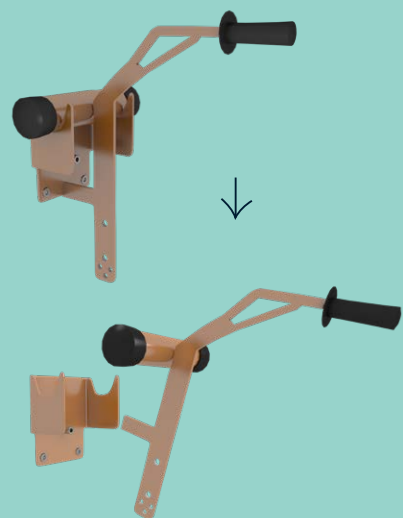
### Mounting Elements



Mounting solution  
for steel beams (80 - 100 mm)  
with angle element



MTPReel Transport bracket



## Connector and Adapter cables

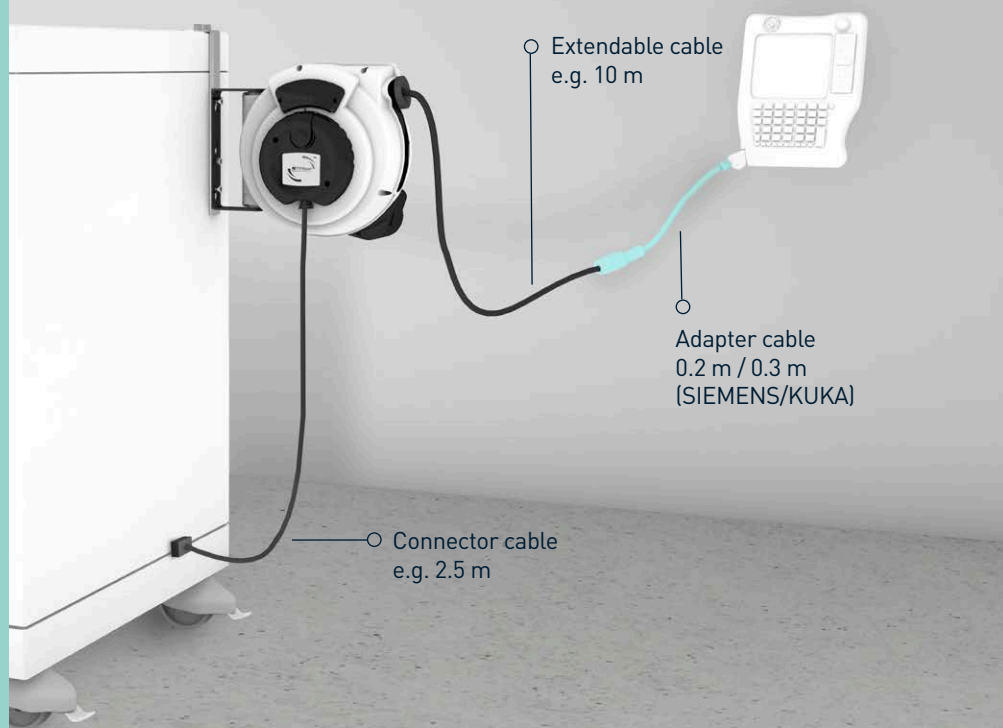
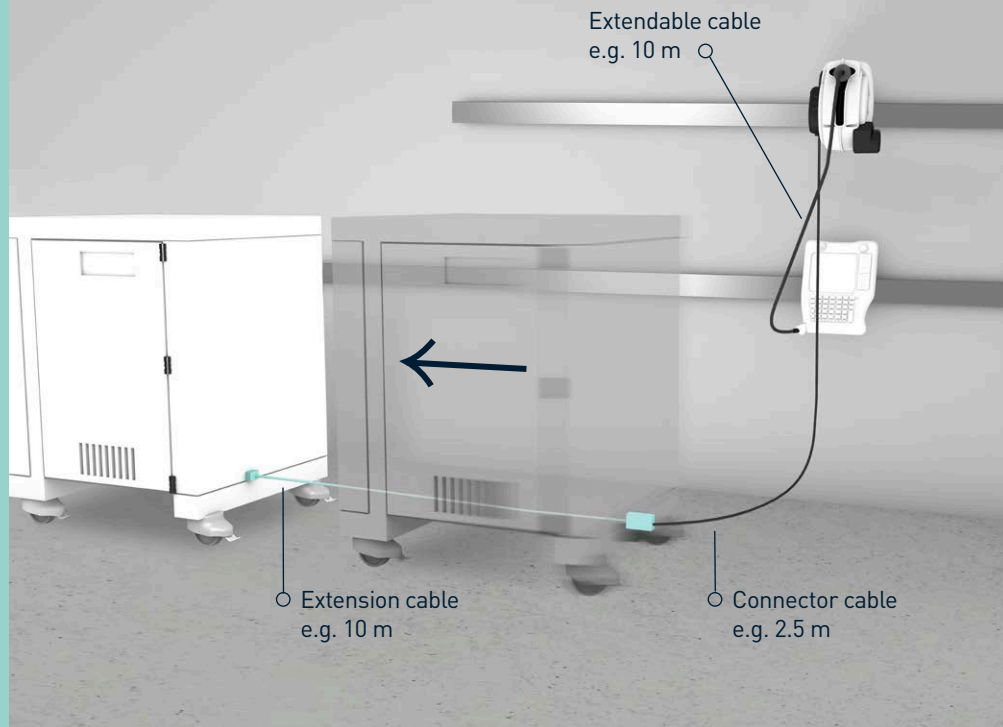


The extension cables can be used to extend the MTPReel connection cable to the control cabinet. This may be necessary, for example, when the control cabinet needs to be relocated



### Do you want to use a handheld programming device for multiple connection options?

Using the adapter cable (length 0.3m or 0.2m), you can connect the MTPReel to different connectors, such as **KUKA** or **SIEMENS**.





## More organization and workplace safety for the handheld programming device

ABB relies on the MTPReel automatic cable retraction system for its industrial robots.

Safety first in the production hall - in many companies, in addition to efficiency, occupational safety is also very important. Robot manufacturer ABB, together with Sumcab Robotics, offers its customers an easy-to-retrofit solution that prevents tripping hazards and increases the lifespan of cables.



Picture gallery

### 1

#### Situation

To accurately adjust motion sequences on a robot, many robots come with a portable handheld programming device that allows the operator to make direct and precise adjustments to the programmed movements directly at the component. At ABB, the handheld programming device is also connected to the robot's control cabinet by using a long cable

### 2

#### Challenge

Once the robot is fully programmed, the handheld programming device and cable need to be tidied up. Rolling up the cable by the operator takes time. If the cable is left lying on the ground untidily, it creates dangerous tripping hazards. ABB was looking for a pragmatic solution to provide the end customer with more safety in this situation.

### 3

#### Solution

With the MTPReel, Sumcab offers a cable retraction system that takes care of the cable winding for the operator. This saves time and ensures that potential hazards caused by cables lying around do not arise. The various options for extension lengths and connectors, as well as the flexible mounting possibilities of the MTPReel, make the use of the cable retraction system possible for all common robots. With this solution, ABB can provide its end customers not only with high-quality robots but also with high occupational safety standards.

## Cable retraction system for custom-made special cables

**MTPReel™-O creates order at an Engel injection molding machine.**

A cable retraction system is meant to create order. However, usually the supplied cable must be used. Now, you can also use your own cable. With the MTPReel-O, Sumcab has created an open solution that can handle almost any cable.



Scan this QR code to watch the video

1

### Situation

In large industrial machines such as injection molding machines, most of the work steps are automated. Depending on the product to be manufactured, the operator makes adjustments using the handheld programming device, which is connected to the machine via a long cable.

2

### Challenge

To improve occupational safety and to protect the cable, a cable retraction system can be introduced. However, some manufacturers of industrial machines have concerns about switching to a different cable for this purpose.

3

### Solution

Sumcab offers an open cable retraction system with the MTPReel-O, which allows the customer to continue using their own cable. The system not only allows for easy installation with the customer's own cable, but also for quick replacement in case of a cable defect. Therefore, the injection molding machine manufacturer Engel offers the MTPReel-O as an option for cable storage for its handheld programming device.



# MTPReel™

## Application example

Tripping hazards caused by cables lying on the floor are a thing of the past with the MTPReel.

Kuka



Please scan the QR code for more application examples

Yaskawa



Fanuc



# MTPReel™

## Recognized workplace safety

Recognized as a measure for accident prevention, as a preventive measure in the manufacturing industry.

(As per the Occupational Health and Safety Management System OHSAS 18001:2007, for instance, to prevent "trip hazards"!)







-KR C5 triplecab

**MTPReel™**

## The solution for all common industrial robots

Thanks to its flexible configurability, the **MTPReel** fits a wide variety of requirements and customer situations. It is also available for all common manufacturers and types of robots.

**ABB**

**h+m**  
surface systems

**Bystronic**

**COMAU**

**ENGEL**

**FANUC**

**HYUNDAI**  
ROBOTICS

**igm**

**Kawasaki**  
Robotics

**KEBA**

**KUKA**

**MITSUBISHI**  
ELECTRIC  
*Changes for the Better*

**Panasonic**

**REIS**  
REIS ROBOTICS

**SEPRO** GROUP

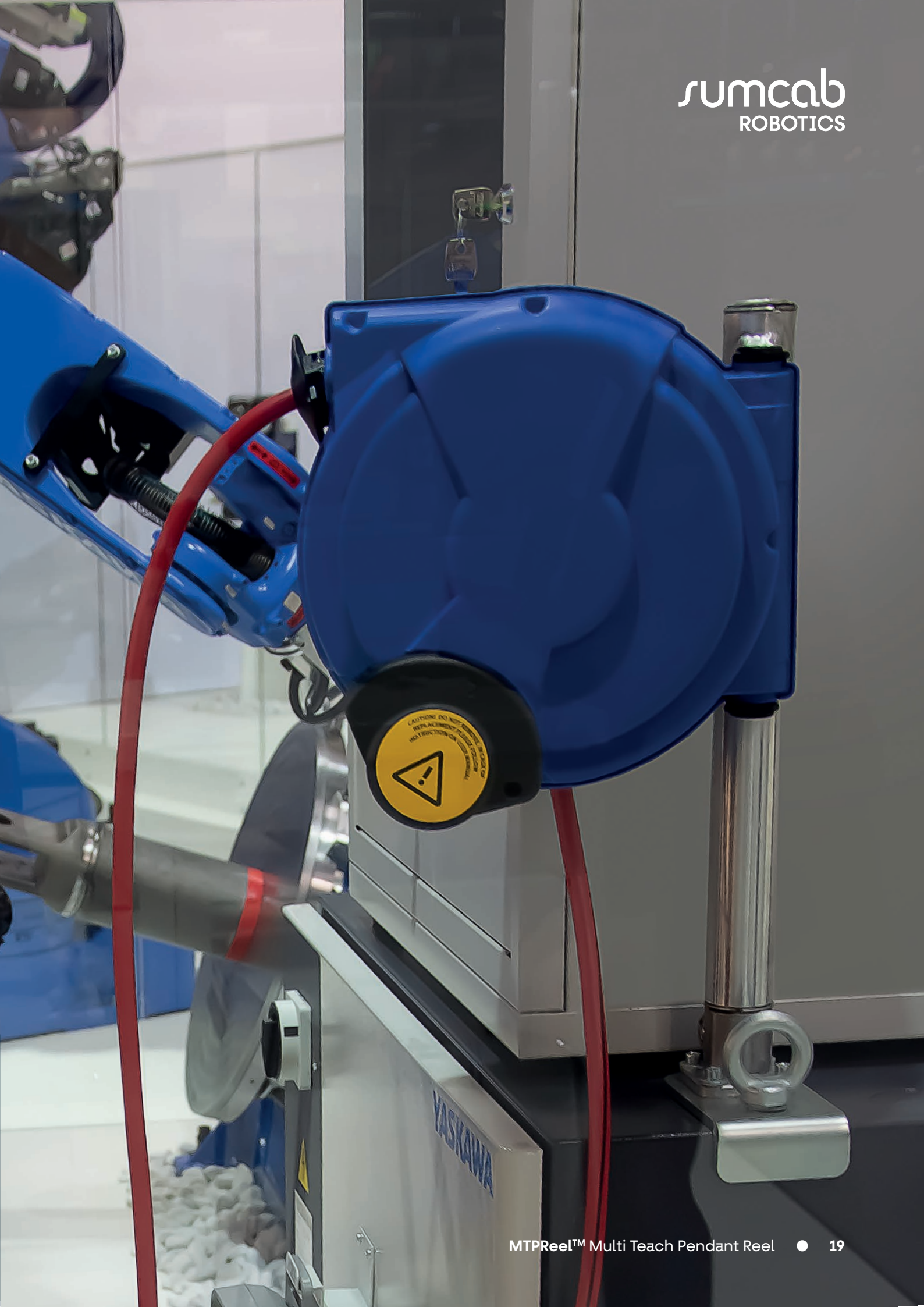
**SIEMENS**

**STÄUBLI**

**YASKAWA**

**Plug & Play -  
Easy retrofitting  
for existing systems**

Even existing systems can be easily expanded with an **MTPReel** without much effort. Because the **MTPReel** is delivered fully pre-assembled and can be connected and put into operation without complicated installation





**Sumcab  
Specialcable GmbH**

Allmendstraße 5/1  
74629 Pfedelbach  
Deutschland

T: +49 7941 646 70 0  
F: +49 7941 646 70 10

**Sumcab Specialcable  
Group, S.L.**

Pol. Ind. Pla de Llerona  
08520 Les Franqueses del  
Valles Barcelona - Spain

T: +34 93 381 92 36  
F: +34 93 462 09 22

**The small change  
that changes  
everything**



**MTPReel™**  
Multi Teach Pendant Reel

[www.sumcab.de](http://www.sumcab.de) | [info@sumcab.de](mailto:info@sumcab.de)

Sumcab Robotics - DE - 09/2023